

USDA REGIONAL CONSERVATION PARTNERSHIP PROGRAM

Memphremagog Long Term Water Quality Partnership FACT SHEET



Overview

The Memphremagog is the second largest lake in Vermont. The mean phosphorus concentrations in the Vermont portions of the lake exceed phosphorus water quality standard by 26%. The VTDEC TMDL land use phosphorus export model identified agriculture as a major contributor to the phosphorus in this watershed.

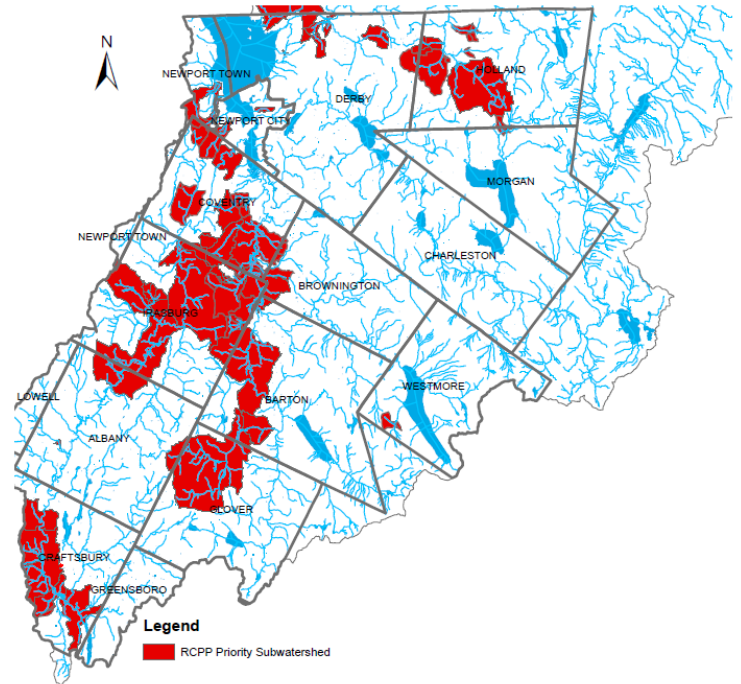
This RCPP project, led by the Orleans County NRCO, seeks to collaborate with regional partners focused on agricultural lands in the Memphremagog and Tomifobia River watersheds, with an emphasis on 303d listed waters and targeted subwatersheds demonstrating high phosphorus loading as indicated by over a decade of water quality sampling results.

The program will provide technical and financial assistance to implement recommended non-structural farmstead practices and field-based practices on all size farms in the watershed with water quality monitoring data results used to track the success of conservation plans. This water quality work has many co-benefits such as increased production, improved fish and wildlife habitat, and a more resilient landscape.

Pledged RCPP Partners

VT Agency Of Agriculture Food and Markets
VT Department of Environmental Conservation
VT Department of Fish and Wildlife
USFW Partners Program
UVM Extension Northwest Crops and Soils
Sarah Flack Consulting

RCPP Priority Area Map



Conservation Practice Funding

Funding will be available till May 2026 to eligible landowners through the RCPP program. NRCS will provide \$595k in financial assistance and \$255k in technical assistance and partners will provide \$950k for approved conservation practices for the purpose of addressing resource concerns. Land and producer eligibility must be met to participate in this initiative.

Resource Concerns Addressed

Water and Soil Quality

- Concentrated erosion;
- Field sediment, nutrient and pathogen loss;
- Soil quality limitations

Practice Priorities

- Practices on farmsteads that are good candidates for the VTAAFM BMP program.
- Practices on annual crop lands.
- Practices on hydrologically connected farm road systems.
- Practices related to buffers in riparian areas, including livestock exclusion and pasture rotation improvements.
- NMP updating and CAPs including assistance with LTP development for support in the UVM Digging in Course.
- NMP 590 with manure injection.
- Practices within areas where the producers have approved water quality monitoring program.
- Soil Health plans and soil health testing.

Innovations

- Double cropping system program with \$53/ac foregone income payment.
- Cost share for MFO NMP annual updates.
- Contract grazing services to 2 farms per year.

Approved Practices for NRCS Financial Assistance

104 - Nutrient Management Plan - Written	468 - Lined Waterway or Outlet
108 Feed management plan	472 - Access Control
110 - Grazing Management Plan - Written	484 - Mulching
116 - Soil Health Plan Management plan	490 - Tree & Shrub Site Preparation
138 - Conservation Plan Supporting Organic Transition - Written	500 - Obstruction removal
216 Soil Health Testing	511 - Forage harvest management
314 - Brush Management	512 Pasture and Hay Planting
315 - Herbaceous Weed Control	516 - Livestock Pipeline
316 Animal Mortality Facility	528 Prescribed Grazing
327 - Conservation Cover	557 - Row Arrangement
328 - Conservation Crop Rotation	558 - Roof Runoff Structure
329 - Residue and Tillage Management, No Till	560 - Access Road
332 - Contour Buffer Strips	561 - Heavy Use Area Protection
334 Controlled Traffic Farming	570 -Stormwater Runoff Control
340 - Cover Crop	574 - Spring Development
342 - Critical Area Planting	575 - Trails and Walkways
345 - Residue & Tillage Management, Reduced Till	578 - Stream Crossing
350 - Sediment Basin	580 - Streambank and Shoreline Protection
360 - Waste Facility Closure	585 - Stripcropping
362 - Diversion	587 - Structure for Water
367 - Roofs and Covers	590- Nutrient Management
378 - Pond 590 - Nutrient Management	604 Saturated Buffer
382 - Fence	606 - Subsurface Drain
386 - Field Border	612 - Tree & Shrub Establishment
391 - Riparian Forest Buffer	614 - Watering Facility
393 - Filter Strip	620- Underground Outlet
395 - Stream Habitat Improvement & Management	635 - Vegetative Treatment Area
396 - Aquatic Organism Passage	638 -Water and Sediment Control Basin
410 - Grade Stabilization Structure	808 - Soil Carbon Amendment
412 - Grassed Waterway	



Program Contacts: Orleans County NRCD Manager Sarah Damsell 802-334-6090 x7008